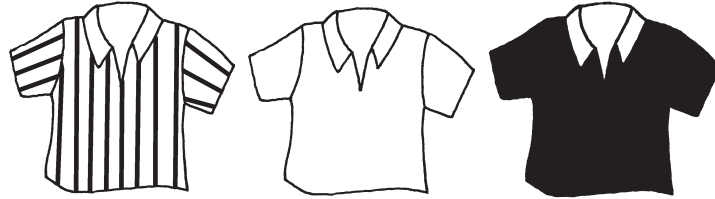





ACTIVITY 4

Directions: Fill in the chart using Y for yes or N for no as you solve the puzzle.

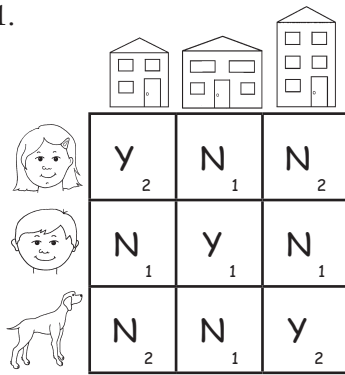


A father, his daughter, and his son will each wear a different shirt today. Use the clues and the chart to find each one's shirt.

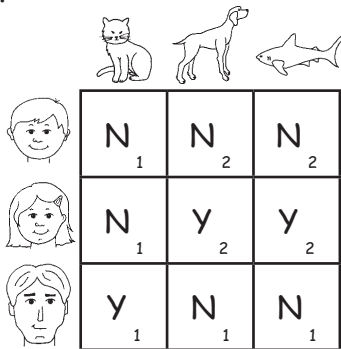
1. The father will not wear stripes.
2. The daughter will not wear anything black or striped.

1.



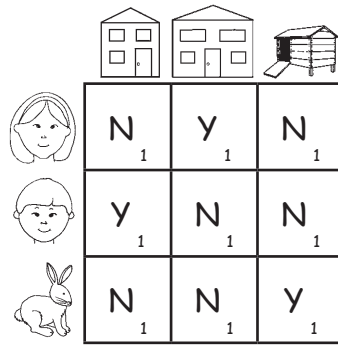
Clue 1 states that the boy lives in the widest house, which is the house in the middle. Clue 2 states that the dog's house is not the smallest. So the dog lives in the biggest house and the girl lives in the smallest house.

2.



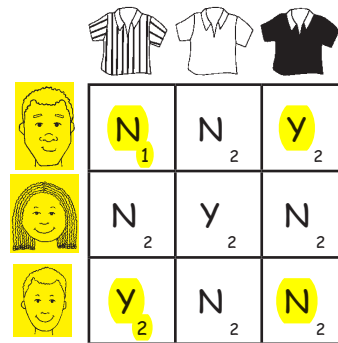
Clue 1 states that the dad's pet was crying in a tree. Only the cat could climb a tree, so the dad's pet is the cat. Clue 2 states that the boy's pet sleeps in his bed. A shark cannot sleep in a bed, so the boy's pet is the dog. That means that the girl's pet is the shark.

3.



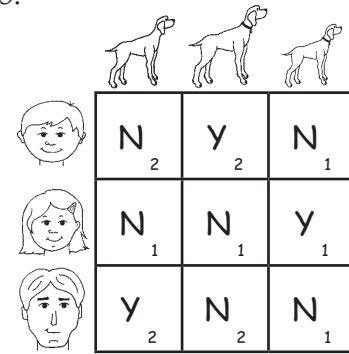
Clue 1 states that the one with the longest hair lives in the biggest house. The little girl has the longest hair. So, she lives in the house in the middle, which is the biggest. Since one of the houses is a rabbit hutch, the rabbit must live in that. Then the boy lives in the other house.

4.



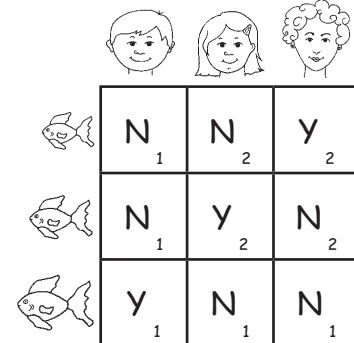
Clue 1 states that the father will not wear stripes, so the father will wear either the black shirt or the white shirt. Clue 2 states that the daughter will not wear anything black or striped. That leaves the white shirt, so the daughter will wear the white shirt. Then the father will wear the black shirt and the son will wear the striped shirt.

5.



Based on Clue 1, the girl's dog is the smallest dog on the right since the other dog with a collar is big. Clue 2 states that the dad's dog is not the biggest or smallest, so it is the middle-sized dog on the left. That means the boy's dog is the biggest dog.

6.



Based on Clue 1, the boy has the biggest fish. Clue 2 says that the tallest owner has the smallest fish. Since the mother is the tallest, she has the smallest fish. So the girl has the middle-sized fish.