



Now I can be the spool,
That holds all the fishing line;
Or I am life that's true,
And happening at the time.

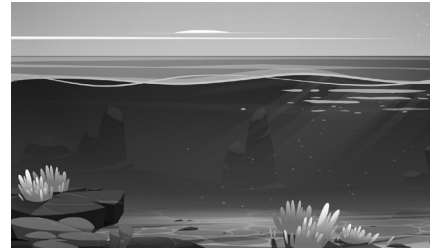
What am I?

___ _ e ___ and ___ _ a ___

From deep in the ocean,
There comes a mighty mammal;
And if I'm called "humpback,"
Doesn't mean I'm a camel.

What am I?

___ _



If the nurse or doctor holds me,
You're rarely glad to see me;
But it's a different story,
When I am on a pine tree.

What am I?

___ _

I'm where the sound starts,
That becomes a yell;
And if I get sore,
To bed 'til you're well.

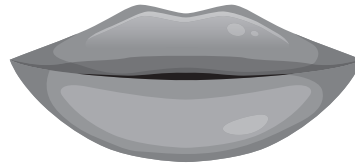
What am I?

___ _



Your lips can't be too dry,
And don't you blow too hard;
A song or noise you'll hear,
From far across the yard.

What am I?



I'm raised from a calf,
Mainly for my meat;
Turn the car wheel,
To stay on the street.

What am I?

A unit of time,
That is more than a day;
When school is through,
You have two days to play.

What am I?

APRIL

2023

SUN	MON	TUE	WED	THU	FRI	SAT
30						1
2	3	4	5	6	7	8
9	10	11	12	13	14	15
16	17	18	19	20	21	22
23	24	25	26	27	28	29



Forget the motor,
When I'm on the boat;
Think of the best time,
To buy a new coat.

What am I?

_____ i _____ and _____ l _____